

---

---

# North Houston Contingency Plan

---

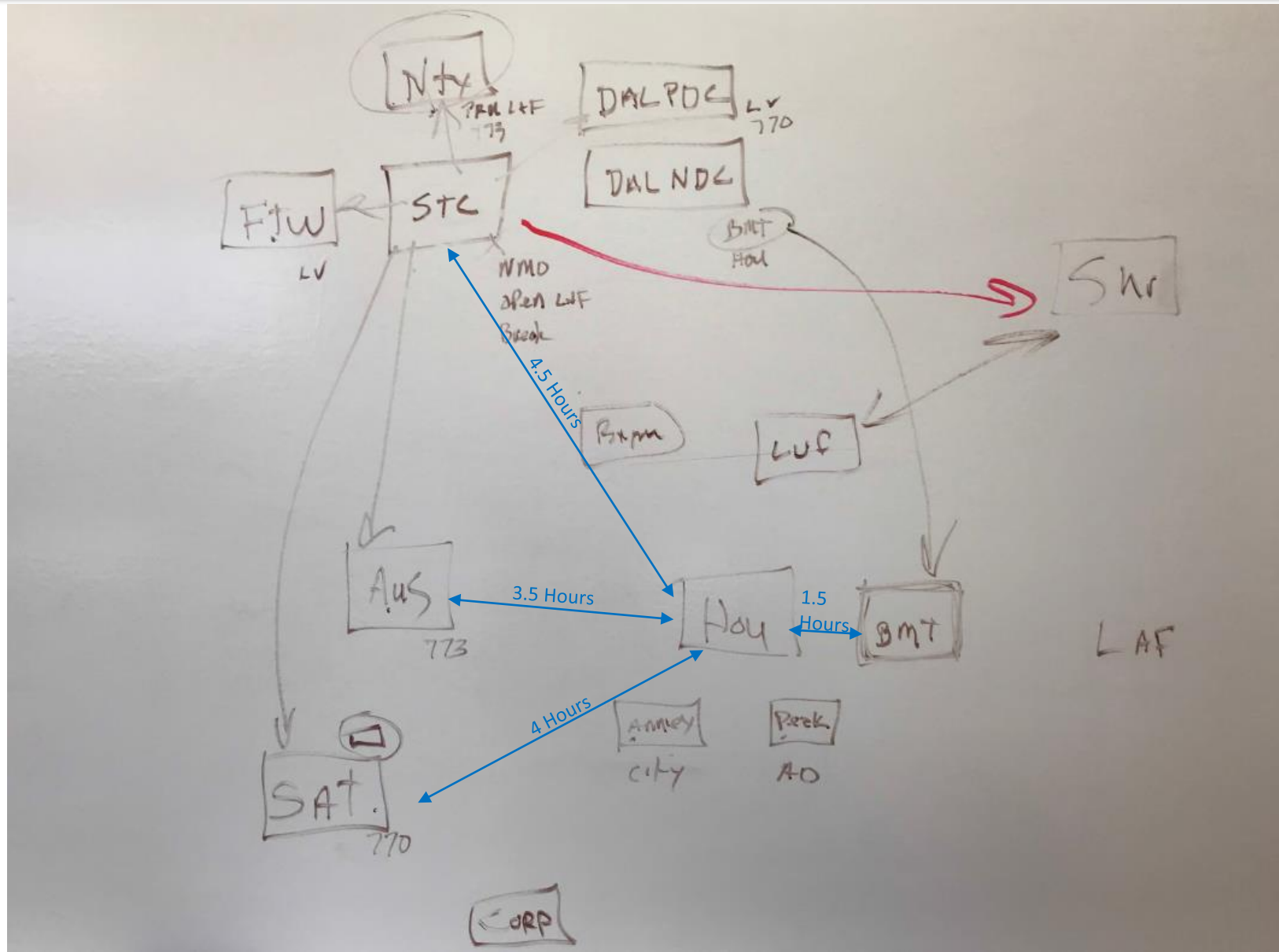
---

STC  
 Jeff Eller

Australian Expansion  
 Jeff Dalton

RPG  
 DPS  
 PRM

PARS > OKC  
 FPARS  
 Manual letters/flats > Hou  
 NMO > STC  
 CFS > Little Rock



## The Houston District has 4 main facilities:

- North Houston PDC
- DDC Annex
- Peak Annex
- Beaumont PDC

## Offload Processing Facilities

- Dallas STC- Incoming separations & Marketing
- NTX- Primary Processing
- Dallas NDC- HSTS LV sort for Marketing trays
- Dallas P&DC- DPS Processing
- Fort Worth P&DC- DPS Processing
- San Antonio- DPS Processing/Outgoing Primary processing
- Austin- DPS Processing/Outgoing Primary processing
- Shreveport- 759 collections and DPS Processing
- Oklahoma City - PARS/FPARS, DPS & Marketing DSCF & DNDC Letters
- Corpus Christi - DPS Processing



All Houston collection mail will go to the **Houston Plant** with the exception of **SCF 759**

Mail will get sorted and dispatched to respective sites for processing.

### DDC Annex (770)

- Will work Outgoing/Incoming Packages
- Cross Dock 770-772 dispatches

### San Antonio PDC (782)

- Outgoing Primary Letters

### Austin PDC (786)

- Outgoing Primary Letters

### Oklahoma PDC (730)

- Will process PARS/FPARs

### Shreveport PDC (711)

- Will process All SCF 759 (Lufkin) volume

All Incoming Trips are now flowing to Houston Plants.

Any income letter volumes received at 75H (Dallas STC) be sorted to the LV plant and 3digit sent to NTX

### Southern Area STC (75H)

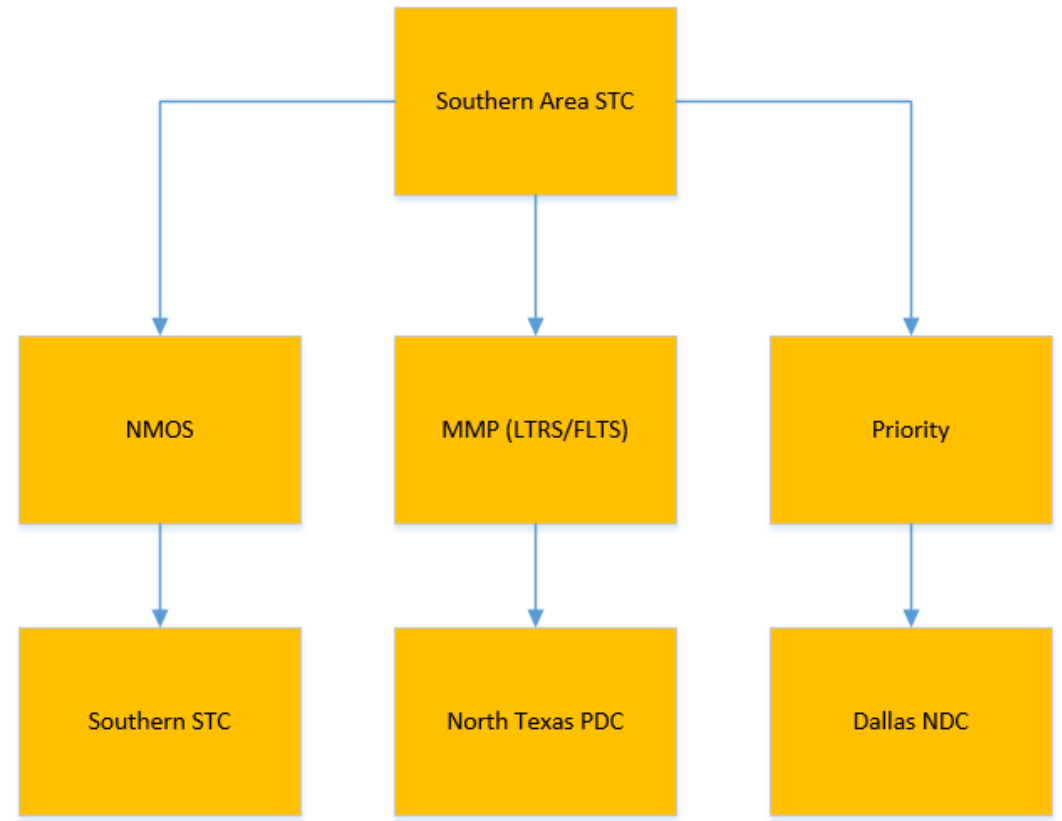
- Will work all Houston NMOs.
- Sort Letter Trays by LV to offload P/DC

### Dallas NDC (75Z)

- Will work all Houston Incoming Priority

### North Texas PDC (750)

- Will work all Houston MMP (LTRS/FLTS)



Inbound Air volume will enter through  
Houston Bush Intercontinental Airport (IAH)

IAH – The Priority and Spurs will  
be kept in Houston for processing.

All incoming letters will be dispatched to the  
Dallas STC for sortation to the 3/5 digit level.

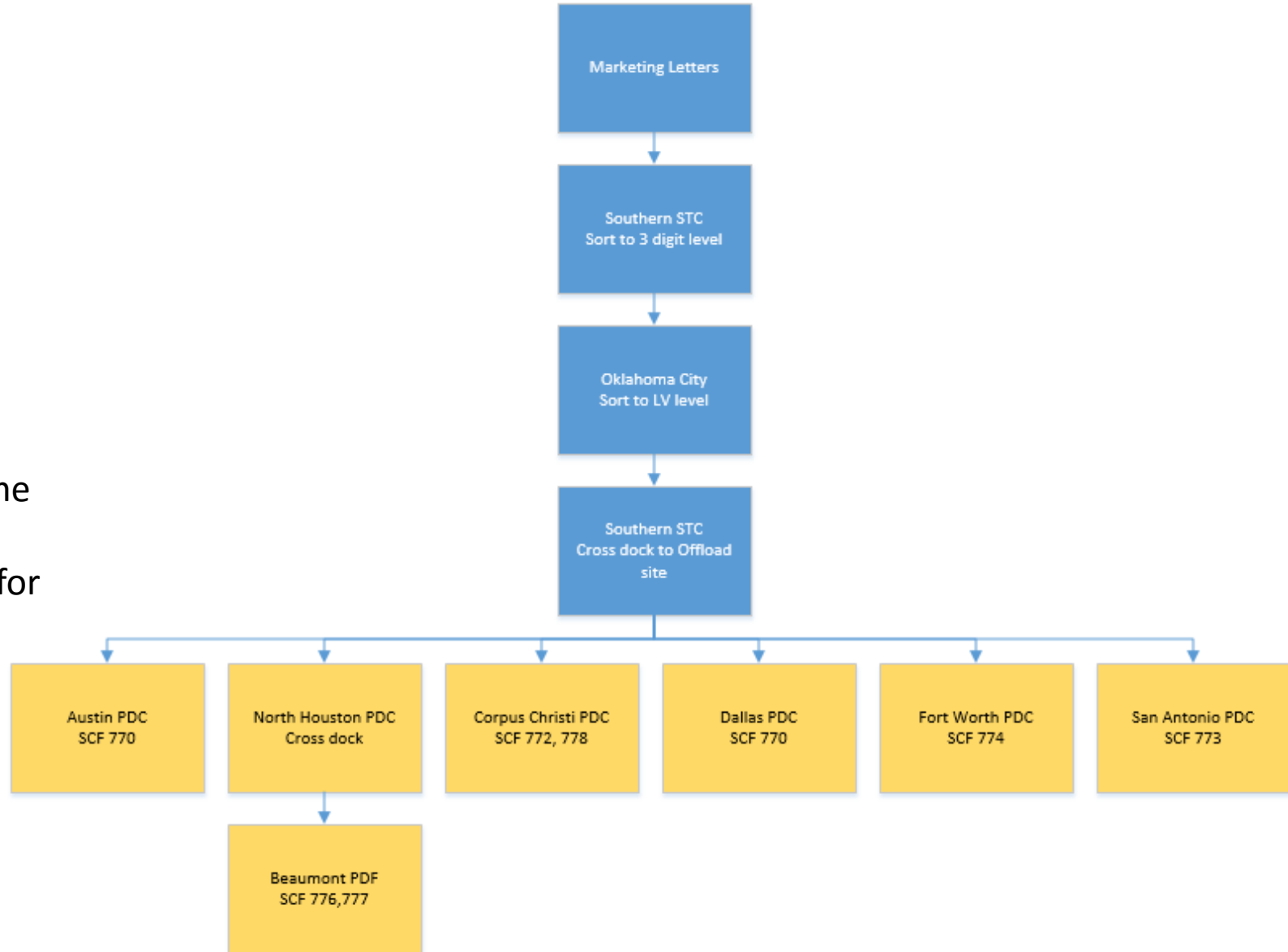
All North Houston Marketing letters will be sent to the Southern Area STC.

### Southern Area STC

- Will sort out LV level
- All 3 digit volume will be sent to OKC

### Oklahoma City PDC

- Process 3 digit Houston marketing volume
- Sort to LV level
- Dispatch the LV trays back to Dallas STC for cross dock to plants



	avg daily 2-pass		avg daily 2-pass		avg daily 2-pass
<b>OKLAHOMA</b>	<b>1,475,467</b>	<b>CORPUS</b>	<b>628,961</b>	<b>AUSTIN P&amp;DC</b>	<b>3,883,295</b>
LV77517U-2	51,400	LV77803U-2	63,061	LV77022U-2	43,620
LV77521U-2	43,803	LV77831U-2	28,084	LV77024U-2	63,713
LV77523U-2	48,425	LV77842U-2	25,633	LV77025U-2	29,842
LV77532U-2	71,453	LV77865U-2	67,240	LV77027U-2	31,853
LV77541U-2	60,532	LV77868U-2	38,401	LV77028U-2	88,064
LV77552U-2	42,691	<b>LV77210U-2 (box)</b>	20,365	LV77030U-2	32,420
LV77553U-2	61,769	LV77249U-2	45,734	LV77031U-2	35,367
LV77572U-2	58,174	LV77298U-2	25,962	LV77032U-2	46,018
LV77573U-2	80,289			LV77033U-2	47,721
LV77584U-2	68,815	<b>FTWORTH</b>	<b>2,162,764</b>	LV77034U-2	47,283
LV77588U-2	91,574	LV77402U-2	86,734	LV77035U-2	58,297
LV77592U-2	58,810	LV77404U-2	33,029	LV77036U-2	38,555
		LV77406U-2	89,885	LV77037U-2	46,834
		LV77417U-2	66,518	LV77038U-2	32,127
		LV77429U-2	87,885	LV77039U-2	42,496
		LV77433U-2	83,751	LV77040U-2	39,292
<b>DALLAS P&amp;DC</b>	<b>1,029,647</b>	LV77434U-2	64,115	LV77041U-2	62,637
LV77002U-2	25,088	LV77444U-2	31,096	LV77042U-2	39,758
LV77003U-2	27,936	LV77449U-2	94,913	LV77045U-2	80,543
LV77004U-2	29,578	LV77450U-2	59,303	LV77055U-2	33,599
LV77005U-2	35,233	LV77478U-2	76,608	LV77056U-2	33,498
LV77006U-2	24,750	LV77479U-2	88,372	LV77057U-2	41,301
LV77007U-2	47,164	LV77492U-2	76,488	LV77059U-2	63,485
LV77008U-2	34,624	LV77494U-2	78,898	LV77063U-2	33,064
LV77011U-2	18,841	LV77497U-2	63,787	LV77064U-2	70,099
LV77013U-2	42,334	<b>896FE420</b>	15,000	LV77065U-2	30,612
LV77014U-2	60,292			LV77070U-2	50,009
LV77015U-2	37,259			LV77072U-2	37,367
LV77017U-2	33,109	<b>SAN ANTONIO</b>	<b>2,162,189</b>	LV77073U-2	60,761
LV77018U-2	24,286	LV77305U-2	83,199	LV77074U-2	28,224
LV77019U-2	36,086	LV77316U-2	99,305	LV77077U-2	63,247
LV77020U-2	16,148	LV77318U-2	68,515	LV77079U-2	49,127
LV77021U-2	22,095	LV77325U-2	65,979	LV77080U-2	28,421
		LV77328U-2	50,260	LV77081U-2	19,376
<b>SHREVEPORT</b>	<b>762,969</b>	LV77338U-2	59,475	LV77082U-2	42,857
LV75901U-2	49,654	LV77340U-2	40,696	LV77083U-2	58,279
LV75930U-2	32,771	LV77346U-2	58,964	LV77084U-2	78,783
LV75935U-2	36,304	LV77353U-2	67,809	LV77087U-2	24,265
LV75961U-2	33,525	LV77357U-2	69,612	LV77088U-2	41,128
LV77502U-2	42,488	LV77373U-2	45,942	LV77089U-2	43,275
LV77505U-2	63,297	LV77375U-2	76,401	LV77095U-2	75,227
LV77507U-2	47,491	LV77379U-2	81,331	LV77099U-2	29,207
LV77516U-2	39,454	LV77381U-2	38,797		
<b>896FE518</b>	8,000	LV77386U-2	82,212		
<b>896FE564</b>	35,000	LV77393U-2	92,597		
<b>896FELU2</b>	30,000	<b>896FE331</b>	7,500		
(759 & 778 smalltown 759 sm twns		<b>896FE363</b>	8,000		
778 sm twns					

	LV RANGES		VOLUME (TOTAL 918 & 919)
<b>DALLAS P&amp;DC</b>	77002-77021		<b>1,029,647</b>
<b>AUSTIN P&amp;DC</b>	77022-77099		<b>3,883,295</b>
<b>CORPUS</b>	ALL 772	ALL 778	<b>628,961</b>
<b>SAN ANTONIO</b>	ALL 773		<b>2,162,189</b>
<b>FTWORTH</b>	ALL 774		<b>2,162,764</b>
<b>SHREVEPORT</b>	77502-77516	ALL 759	<b>689,969</b>
<b>BEAUMONT</b>	776-777	(OWN ZONES)	
<b>OKLAHOMA</b>	77517-77592		<b>1,475,467</b>